

Winter InDownton

FREE

Downton River Festival 2024?

Join the kick-off meeting on 1 February.

Many local charities, businesses and groups are looking for new opportunities to generate the vital income they would usually achieve at the annual Cuckoo Fair, which isn't happening this year. One idea is to make 2024 the year we work together on a programme of small events to enable local groups and businesses to raise funds and have some fun. This won't replace the Cuckoo fair in any way, it will simply provide a platform to help local groups to coordinate smaller events throughout the year.

There will be a public meeting to discuss this possibility, share ideas, coordinate groups and form a plan at 7.30pm on Thursday 1 February at The Bonvalot Room, Memorial Centre (use side entrance on right). All local groups looking to run events this year and any Downton businesses, groups and individuals with events expertise or just ideas are encouraged to attend.

...continued on page 2



High river levels earlier in January

Comment

Happy New Year!

As the village faces the loss of the Cuckoo Fair this year, the team at InDownton are ready to help fill the fundraising gap if it can. The idea of making this the year of the river, and using that as a platform for a number of local events might help, but if there are other ideas, we'll happily drop in behind them instead. We want to support Downton to be the best it can be.

Many articles have to be edited down so that they can fit in the newsletter. In many cases the full article can be viewed on our website, so do check if there's something you are particularly interested in.

The editorial team

MALCOLM AND THE MOVING WATER WHEEL MYSTERY!

In December, Christmas lights once again appeared by the river outside the Old Tannery due to the efforts of Malcolm Dean and David Goddard along with local financial sponsors. This harked back to the time when it was still a working factory and every year a lit Christmas Tree was erected.

When Malcolm and David went to take down the lights at the beginning of January, the Water Wheel at the Old Tannery, they found that the wheel started turning again - for the first time since the late 1990s. Malcolm isn't sure what they did to make this happen. The wheel was restored to a high standard when the new development took place, but it never turned after it was reinstalled in 2003. Many

villagers were delighted to see the wheel working again for a short time. Whether it turns again is yet to be seen. The wheel can be viewed from Tannery Bridge, but it stands on private land. Read more about the history of The Tannery on page 2.



Martin Easterbrook, one of the sponsors of the Christmas lights, and Malcolm Dean with the moving wheel.

LOOKING BACK AT THE HISTORY OF THE TANNERY

Tanning was an important industry in Downton, with a tannery recorded as existing in the village in the 16th century. A new tannery building, which became Downton Tanning Company Ltd, was built in the early 20th century. It made leather for harnesses and saddles until it closed in 1998 for the site to be redeveloped for flats and retirement homes.

The water wheel, which had provided power for the tanning process, was removed in 2002, restored by the developers, and returned to the village in 2003 - in the original position that it had occupied since the end of World War I. Tony Cowle, whose company refurbished the wheel, said at the time that he believed the water wheel was probably made in the late 1800s and he was pleased to see it restored to its former glory. 75 litres of special paint was applied so that the wheel would be protected when it was immersed in water.



Tannery Bridge, image: Alys Bardo collection

River Festival proposal continued from Front Page...

The Downton River Festival is simply a platform to connect groups to collaborate on events, help create a plan, coordinate dates with a central calendar to avoid clashes and encourage collaboration, create artwork and publicise the programme. Each event of the Downton River Festival will be organised and run by the groups themselves. Small events could include anything from a village fete to craft fairs, guided walks, entertainment evenings, art exhibitions, open air cinema, maypole dance, parade or duck race - all ideas are welcome!

Why a 'river' festival?

The reason that Downton is here is because this is where the Romans and others crossed the river. The river has provided Downton with food, wildlife and prosperity and has inspired artists and writers through the centuries. A light

river theme is broad enough to unite the events and will help us promote the



Sketched logo: creating a brand is planned

programme widely and attract visitors. The theme will have clear links to the village which means that locals and visitors can learn about our river, its history and ecology.

More information?

To keep in touch with the progress watch social media or the InDownton website. To put forward suggestions, email editor@indownton.org.uk. At this stage InDownton is simply offering a platform to enable the idea to develop, and its website and publishing resources which could be used to support the Festival.

✦

Assign-PA

Personal Assistant
Business Support
Lifestyle Admin

Support as and when you need it.

e: candi@assignpa.co.uk
w: www.assignpa.co.uk ✦

EAR2CLEAR

Ear Wax Removal

Nicola Daley-Cook
07894 532199

Email Nicola.ear2clear.uk@gmail.com

CHRISTMAS TREE FESTIVAL

The festival had over 550 visitors and raised almost £3,000 which will be divided between Riding for the Disabled and St Laurence Church. Pictured is DADA performing at the festival and a couple of the exhibits.



DOWNTON BANDS

Downton Band achieved notable success at the Annual Wessex Brass Band contest held at Ringwood In November. It won the 2nd Section playing the atmospheric “Penlee”, written by Simon Dobson, to mark the Penlee lifeboat tragedy in Cornwall December 1981. It also won best march in the 2nd Section, a particularly poignant success as the Band played “The White Horse”, a march written by composer Andy Wareham to commemorate the Band’s 150th Anniversary in 2023.



4.30 am, Moot House, Christmas Day.

On several evenings in December, the band were out and about playing carols around the village. They also played for the village carol service and at Charlton All Saints. The main band, supported by Beginner’s

Brass and the Training Band teamed up with the Community Choir to put on a free concert of Christmas music at St Laurence Church.



7.30 am The Borough, Christmas Morning, after 3.5 hours of carolling!

Currently, the Band is working on the test piece “Corineus” in preparation for the National Brass Band Championships qualifying weekend in Torquay on 9-10 March. A real highlight for the Band this year will be a full rehearsal weekend on 3 and 4 February which will be led by the test piece’s composer, Christopher Bond.

The Band is also planning to play a special concert in Downton on the afternoon of 4 May, venue and timing yet to be announced.

The Cutting Edge
Landscape and grounds maintenance

Garden Landscaping & Maintenance

Hedging	Drives
Trees	Patios
Pressure washing	Fencing
Decking	Lawns

* Michael Easterbrook *
07801474816 or 01725511109

✉ becks777@aol.com
Facebook: Cuttingedge Downton
cuttingedgedownton.wixsite.com

Checkatrade registered Horticulture Society
Fully insured Disposal Licenses

**EVERY THURSDAY FROM 1.45PM
AT ASHLEY GRANGE NURSING HOME**

Ashley Grange Friendship Group

A fun group for older people where you can enjoy **free entertainment, fun activities, cakes and refreshments** and a natter with **friends**, old and new.

JOIN OUR FRIENDLY GROUP

**For more information contact Lynn Kinsey on:
0800 3247908 | lynn.kinsey@hartfordcare.co.uk**

Ashley Grange part of the Hartford Care family
Ashley Grange, Lode Hill, Downton, Salisbury, SP5 3 PP

MILLENIUM GREEN TRUST REMEMBERS ROGER STICKLEY

The Millennium Green Trust are sorry to announce the passing of Roger Stickley.

Roger was an effective Trustee of the Millennium Green for over a decade. His creative and practical skills will be missed by the team that maintain the Green. His stalwart attendance and can-do attitude together with his humour made Roger a key player.

Those qualities were also deployed over three decades in the design and manufacture of stage props and equipment. If you attended the VE Day celebrations, the Millennium Concert,

the Golden Jubilee Concert, the Coronation Concert and countless other events you would doubtless have enjoyed Roger's creations.

A spokesperson for the Trust said, "Our thoughts are with Sue Stickley and their family. We all feel privileged to have known and worked with Roger."



THE WARDROBE

The Wardrobe Clothing Exchange takes place at the Baptist Church once a month - usually on the third Friday of the month from 2pm - 3:30pm. The next dates are: 16 February

and 22 March. Volunteers meet at the church on the Wednesday before, from 1pm - 3pm to sort out donations, and more help is always welcomed.

COMMUNITY POLICE OFFICER P C 0081 HARRY MURPHY WRITES:

I would like to thank everyone who has taken the time to contact the police - either to report an incident, or a concern that something is about to happen. A vehicle registration / description of those that you see can be very helpful. This information is also used to ascertain where and when our officers in Salisbury need to be on their patrols - and this is key to us being able to catch and deal robustly with offenders.

I am here to help and will do everything I can to request more police patrols in our village, especially during the hours of darkness. However I would still encourage you all to be vigilant and take extra measures to secure your properties. This may mean:



upgrading your locks; parking your vehicle right up against your garage door; reinforcing windows or doors that are perhaps unused or less frequently used; installing security lights and CCTV cameras. This is not an exhaustive list, but it all helps.

In addition, it's a good idea to check sheds and outbuildings. Despite best efforts to deter criminals, we are still seeing sheds/garages being broken into in the south of the county, with tools and other valuables being stolen. Most of these crimes are opportunist thefts that only take a matter of minutes, sometimes seconds, to happen.

Please look after each other and protect your property."

Caxton Decor & Caxton Interiors

Dulux Trade and Retail
The Little Greene Paint Company
Paint and Paper Library
Timber, Glass, Plumbing, Electrical,
Tools, Gardening, Cookware, Hardware, and
much, much, more
01425 652700 / 653489

Visit our superb showroom for
a stunning selection of soft
furnishings
Wall-coverings & Fabrics
Curtains & Carpets
Blinds Etc, Haberdashery
Bed Linen & Towels
01425 654122

Fordingbridge
Open 8.00 - 5.00 Monday to Saturday
26-30 Salisbury Street, Fordingbridge

FLOW CIC UPDATE

Adam Ellis, set up Community Interest Company, For the Love Of Water (FLOW), a little over a year ago. He says, “It’s been a busy first year. I am proud of what we’ve managed to achieve and grateful to all the volunteers and partners that have helped us. One of our volunteer samplers, Jane Launchbury, also produced a FLOW exhibit for the village Christmas tree festival.”

There are 13 volunteers working on the river, from Salisbury to Christchurch, and the company has analysed over 260 water samples. The Lower Avon Farming Cluster (supported by The Game and Wildlife Conservation Trust) is taking part in the scheme and have funded test kits for six of their members including farms upstream and downstream of Downton. Samplers usually test weekly for ammonia, phosphate, nitrate as well as temperature and conductivity. It takes time to identify any patterns, but already there have been some very high readings for ammonia and phosphate which have been reported to the Environment Agency for further investigation. There are currently more samplers than sample kits, but Adam is hopeful that as funding becomes available, more people will be able to get involved.

The company is also taking macro-invertebrate samples, although water levels were too high this autumn to get the 2nd sample. The

initial data from the Downton site shows river fly diversity is at the lowest of any of the sites on the lower Avon,

with suggestions of stressors linked to phosphorus, sediment and organic enrichment. This ‘SmartRivers’ scheme is run by the charity WildFish - their website has more details. If anyone is interested in looking at this data contact FLOW.

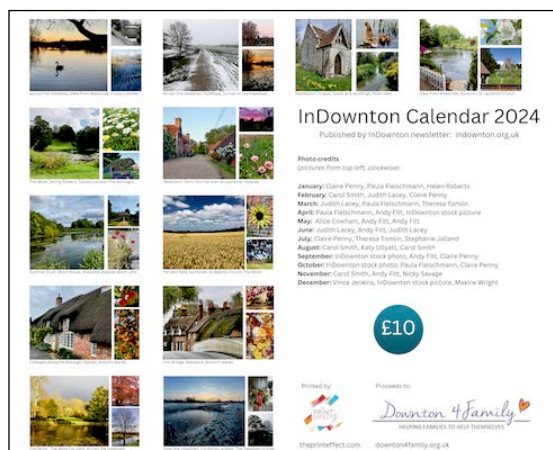
Wessex Water is planning significant improvements to the Downton works between 2025-30. There have been works to survey and fix leaking pipes in the village sewage network, to reduce groundwater infiltration which overwhelms the treatment works. FLOW has arranged a tour of the works on Saturday 24 February. It’s a chance to see how the treatment works operate and hear about plans to improve the site. Contact Adam for more information.

For more information email: info@loveofwater.org or go to loveofwater.org or [facebook.com/flowcic](https://www.facebook.com/flowcic). For a longer version of this article, go to indownton.org.



Adam with a Pike caught in December in Downton. There are angling opportunities with Salisbury and District Angling Club.

INDOWNTON PHOTO CALENDAR STILL AVAILABLE



The 2024 InDownton Calendar is still available to purchase. It has lots of local photos by local photographers. Purchase online by going to the InDownton website (indownton.org.uk) or from the Borough Cafe or Hair Art in The Headlands. The price is £10 and a minimum of £5 goes to Downton 4 Family. The calendar can be ordered online and delivered to any Downton address free, or it can be sent to anywhere in the UK for an extra charge to cover postage. It includes an envelope.

ADVENTURES IN MOLDOVA

Local volunteer, Andy Fitt, has been working with TEECH, an independent Colchester based charity, whose vision is to improve the lives of those living in Eastern Europe, who are living in conditions not seen in Western Europe since before the war. One of the charity's aims is to install sanitary ware in schools, orphanages and residences for the elderly, where no indoor toilets exist. The charity also delivers clothing, toys and shoes to local communities.

Last year, Andy was a member of a group of 15 volunteers going to Moldova to work in two schools - installing indoor toilet and washing facilities. Existing facilities in most schools in Moldova are little more than a brick outhouse, with a concrete floor, and holes over a pit.

The team arrived in the village of Slovenca in the late afternoon/early evening - ready to convert a classroom into bathroom facilities.

They painted walls and put up stud walls to divide the room into two. Sanitary ware was installed as well as new lighting, hand driers, a water heater, and a septic tank.



Installing basins at Mindresti Noi

Four days later Andy and the team moved on to the village school in Mindresti Noi where there were two rooms to convert into bathrooms for girls and boys.



The finished toilet block at Slovenca

In addition to all the practical work the team took turns to head out and about in the local communities distributing food boxes, medical supplies and clothing etc. They also delivered donated food and bottled water supplies to the Ukrainian refugee centre in Balti.

Altogether, Andy was away for two and a half weeks, including 10 days in Moldova. Outbound travel was continuous until crossing into Romania at the end of day two. The return journey again involved a stop in Romania, and another in Hungary, and then a dash across Europe to reach Calais by 4am the following day.

For more information about TEECH, past year's projects and the recent Christmas trip to Moldova to deliver humanitarian aid, medical supplies, food boxes, and Christmas shoeboxes for the children go to: teech.org.weebly.com.

LOCAL FUND RAISING

Lynn Purcell's Open House weekend at the end of November raised over £300 for the Breast Care Unit at Salisbury Hospital. Lynn would like to thank all the bakers and coffee makers who helped make and serve refreshments - and to all those who visited The Corn Mill.

Kayleigh and Andy Savage raised over £1800 with their Christmas light display for The Brain Tumour Charity in memory of Zoe Noble. They would like to say a special thank you to The Clubhouse for their donation of £300, raised through the Christmas prize draw.


clubbercise
CLUB ANTHEMS // DANCE // TONING // COMBAT
Monday 7-8pm Downton Memorial Hall £6.50
Tuesday 6:30-7:30pm Fordingbridge Town Hall £6.50
Thursday 6-6:45pm Hulse Hall Breamore £6
PAYE AS YOU GO OR BUY A PASS AND SAVE! TO BOOK;
WWW.MYHHF.CO.UK
 FACEBOOK/CLUBBERCISEPENNY
 07741255646
 CLUBBERCISEPENNY@YAHOO.COM


ASG LANDSCAPING
 Natural Stone & Porcelain Paving
 Fencing • Turfing • Astro Turf
 and much more...
 07798 760137 info@asglandscaping.co.uk

PARISH COUNCIL NEWS

Downton Parish Council were pleased to be able to step in and provide the Christmas tree on the Borough Green. Downton 4 Family were invited to turn on the lights, and village choirs led the Christmas singing. Father Christmas was in attendance - and The Grinch was spotted lurking too.



Christmas Tree lights

With the Memorial Gardens play park now completed, The Moot Lane refurbishment started on January 8, with an expected finish date in February at half term. Details of the opening date will be advertised nearer the time.

120 saplings have been purchased to plant a hedge in Moot Lane adjacent to the Moot Lane Rec.

The Council would like to remind residents that although contractors will continue to trim verges and mow areas of public land, most shrubs and trees that spill out over our roads and footpaths are the property of the homeowner/landowner who owns the adjacent field or garden. They are therefore urging people whose shrubs are encroaching on pavements or overhanging roads to trim back overgrowth to ensure safe access for pedestrians and motorists who pass by. As the main bird breeding season is recognised as being between 1 March and 31 July, it's recommended that you should first check the hedge for any signs of breeding activity, in consideration of the Wildlife and Countryside Act 1981 and the European Habitats Directive 1992/Nesting Birds Directive.



Moot Lane works underway

Problems with roads or footpaths managed by Wiltshire Council (eg potholes, blocked road gullies or graffiti), can be reported using the "MyWilts" section of the Wiltshire Council website wiltshire.gov.uk/mywilts-online-reporting.

Susan Barnhurst-Davies is the Administrative Officer for the Parish Council. She can be contacted on Tuesday, Wednesday, and Thursdays between 9am and 4pm on 07483 344035 or admin@downtonparishcouncil.gov.uk. Where appropriate, she may redirect queries to Councillors or the Parish Clerk.

ELECTRICITY WORK POSTPONED

The major electricity cable replacement works that were due to take place in the Borough in January have now been postponed until later in the year (probably in June), due to the high water table. The Parish Council has been promised that the ground affected by the work will have top soil replaced and be reseeded and maintained after the work is finished.

Brian's Kitchens and Bathrooms
From Design to Installation

Call Brian to arrange your free home consultation.
www.brianskitchens.co.uk
 email: Brianskitchens001@googlemail.com
 Mobile: 0782 500 42 58

Checkatrade

GARDENS OF DISTINCTION
 Passion for creating beautiful outdoor spaces

- Landscape & Garden Design
- Garden Consultation
- Planting Plans
- Construction Tendering
- Project Management
- Maintenance Schedules

www.davidlonggardendesign.co.uk
 07747 750842 01725 514622
studio@davidlonggardens.co.uk

David Long Garden Design
 david_long_gardens

The Gardeners Guild
 REGISTERED MEMBER

PROFILE: REVD VERONICA BATCHELOR, TEAM VICAR



What brought you to this area?

I was brought up in the New Forest and attended the local schools. My parents ran a family business and in later years our home became home to my parents, grandmother, sister, brother-in-law, nephew and niece. I'm fortunate to live in that same house again with my own family.

What did you do before you became a vicar?

My first job was mixing concrete at aged 12! Later jobs included office secretary, managing accounts and company secretary for the family business. I began leading the preschool. It's been quite the journey to get here but they say – God works in mysterious ways.

Did you always want to be a vicar?

Like most young girls, the role of a vicar was not my dream job. Growing up I didn't attend church and didn't think the church, God or religion had anything to offer me. However, at the age of 30 I realised I had lots of questions about life, and found that I was wrong, God had everything to offer.

Tell us more about your family, including your pets:

I'm married to Malcolm and we have two adult daughters. We're fortunate that we see them often, as our youngest lives with us and our eldest has recently moved back to Downton with her partner. My husband and I have always enjoyed the company of animals and over the years we've welcomed cats, dogs, gerbils, guinea pigs and fish. We currently have two beautiful golden retrievers.

What is your role within the Forest and Avon Team?

I've been a vicar in the Forest and Avon Team since 2010 but July 2022, my role is to lead worship and mission in Downton, Redlynch, Morgans Vale and Woodfalls, which I do alongside colleagues and we work collaboratively with the Methodist Church in Woodfalls and Landford.

What do you like most and least about your job?

Whilst it might be cliché to say, meeting people, growing relationships and being part of the community is the best part of my job! It's wonderful to be welcomed into people's lives for special events such as weddings and christenings and it is also a privilege to walk alongside people in their time of need. Although, I begrudgingly spend more time in my office than I'd like.

What's your priorities for 2024 for Downton in particular?

My priorities for Downton is to share in the good work that is already being done by so many in this community. I'd love to see St.Laurence connecting with more people of Downton and beyond in helping to secure the future of this beautiful parish church which has been a part of Downton for over 900 years. It is a unique and special setting for everyone within the community; all faiths and none.

Has Downton lost out by losing its village based CofE minister?

In an ideal world, every church and village would have its own vicar – or two. But unfortunately, the wider church does not have the resources to facilitate this. To best serve our communities, we work as a team to provide and be a presence within the communities. There have been many benefits to this. Each village and church is served by three vicars, each offering their own skills, and resources are shared between churches and villages. This has truly been the meaning of Christianity and community: coming together as one and sharing what we have with others.

How do you unwind?

I enjoy art and crafts. The New Forest has always been my place of peace. A walk across the forest with the fresh air, bird song and grazing ponies is rejuvenating. Follow up with a glass of gin and with dogs curled up in front of a roaring fire then you have one happy vicar.

the borough café

Your local independent café.
Employing local people.

Open 7 days a week!

Check the website for opening hours.
www.theboroughcafe.co.uk
70 The Borough tel: 01725 238083
Outside seating in the rear sheltered courtyard or at the front.

GOOD COMPANIONS

Good Companions meet in the Downton Memorial Hall on Tuesdays from 2pm to 4pm. A varied programme has been arranged for the next few weeks, including some games sessions and a variety of different speakers, including a talk on 13 February about Norway’s fabulous fjords. Regulars pay £2, visitors pay £2.50 and

refreshments are included. For details contact Julia Whitmarsh on 510601. The full programme is available on our website indownton.org.uk/latest-news.



Norway's fjords

DOWNTON SOCIETY AT 40

To celebrate 40 years since it was founded, the Downton Society will be holding some special events in 2024. The first, in Spring, will be a talk by local farmer, Minette Batters, who is coming to the end of her 2nd term as NFU President and has definite views on the role and importance of farming in communities.

The Society’s website will confirm dates for this, as well as other social occasions, walks and talks - some of which are offered in conjunction with the Salisbury Civic Society.

The website also has details about

conservation, planning and community issues such as footpaths, planting, traffic and river pollution. Nikki Wilson, Society Chair says: “As the coming year is likely to be a busy one, new members and fresh ideas are welcomed. If you would like to join the Downton Society, and help to protect and improve the lovely village environment in which we all live, please view our website.” The site can be found at thedowntonsociety.org or contact Nikki Wilson on nrpfw@aol.com for further details.

HORTICULTURAL SOCIETY

The first event of 2024 will be in the Memorial Hall at 7.30pm on 21 March - an illustrated talk entitled ‘The History of the Cherry Tree Nursery’ by Maria Tidy. The Nursery, based in Bournemouth, was set up in 1990 by a charity with the aim of restoring the mental wellbeing of people with mental illness, and giving purpose to people’s lives through the use of therapeutic horticulture. As usual there will be refreshments, a raffle and a sales table. Annual membership of the society costs £6 and

the money goes towards booking expert speakers, hiring the Memorial Hall and RHS insurance for events. The society is grateful for donations from non-members too.



The Cherry Tree Nursery

PETER COX
PAINTER & DECORATOR



ALL ASPECTS OF DECORATING WORK UNDERTAKEN AT A COMPETITIVE PRICE. EST SINCE 1986

MOBILE TEL NO: 07932015658
EMAIL: coxpeter.7@hotmail.co.uk

RDAVERY
COMPLETE • VEHICLE • CARE

Call us: 01794 323296
Your local garage for Car, Van & HGV

MOT CENTRE
CLASS 4, 5 & 7
ALL CLASSES OF CAR AND LIGHT COMMERCIAL

We are a COVID-19 secure site



Call 01794 323296 or email hello@rdavery.com to book
New Road, Landford, SP5 2AZ



LOVER REPAIR CAFÉ

The regular monthly support to organisations in need continues and the team have now added Downton Foodbank to their list. Contact them if you know of any local organisation that might benefit from their help.

For most repairs, the item is first dismantled to check the cause of any particular problem. At this stage, the Repair Team's "Fixer" has to carry out some detective work, perhaps by checking on-line with Google to find out the best way to resolve the snag, prior to undertaking the repair. This might include finding replacement parts, before reassembling and completing the task.

This procedure was followed when taking on the repair of an old Decca Record Player.

Currently in the donation shop (open every Wednesday and Friday), the team have the

following items for sale (all items are checked, cleaned and serviced):

Tesco Air Bed, Portable Type-writer/case, Sennheiser Wireless Headset, Radio Alarm Clock, Modern Angle Poise Lamp, Ladies Bike, and Men's Bike



Record player in bits

The team is happy to help with repairing furniture, ceramics, electrical goods, clothing items or old treasures. Simply drop in to see them at Redlynch Village Hall, Wednesday and Friday mornings, 10am - 12 noon. Or contact them on 510753 / email loverrepaircafe@gmail.com.

DOWNTON 4 FAMILY

Thanks to a huge collection of donations, Downton 4 Family's Reverse Advent Calendar campaign was able to put together a large number of hampers to be shared with local families. The hampers were sorted with help from the pupils of Downton Primary School and Trafalgar School - with Ashley Grange Nursing Home lending a hand too.

The charity held a pre-Christmas Craft morning for families - decorating gingerbread houses and making Christmas cards. Programme manager, Helen Holgate said: "This was an opportunity for children and parents to enjoy a pre-Christmas get together. We had hot chocolate and maybe a few sweets too.

Children smiled and parents chatted. Well done to all who created this cosy time."

The charity was also on hand to help Downton Parish Council with their switching on of the Christmas Tree lights.

The charity is there for families who may be finding times difficult, go to downton4family.org.uk or their Facebook page for more information.



Sorting food for hampers



Helping you plan for future security and your family's prosperity

Downton's great value "at home" service for
Estate & Inheritance Tax Planning
Wills Trusts
Lasting Powers of Attorney

Mark Benson TEP, MSWW
Registered Trust & Estate Practitioner

relaygo@capitalandprofessional.com 07803 507 905

... a service from **Capital & Professional**
CONSULTING LIMITED

CLARE KAYE

ADMIN, BOOKKEEPING & ACCOUNTING SERVICES

MAAT Qualified and an AAT Licenced Bookkeeper and Accountant.

Experience in Sage 50 and Sage One, preparing and submitting company VAT Returns and Self Employed Tax Returns.

GET IN TOUCH

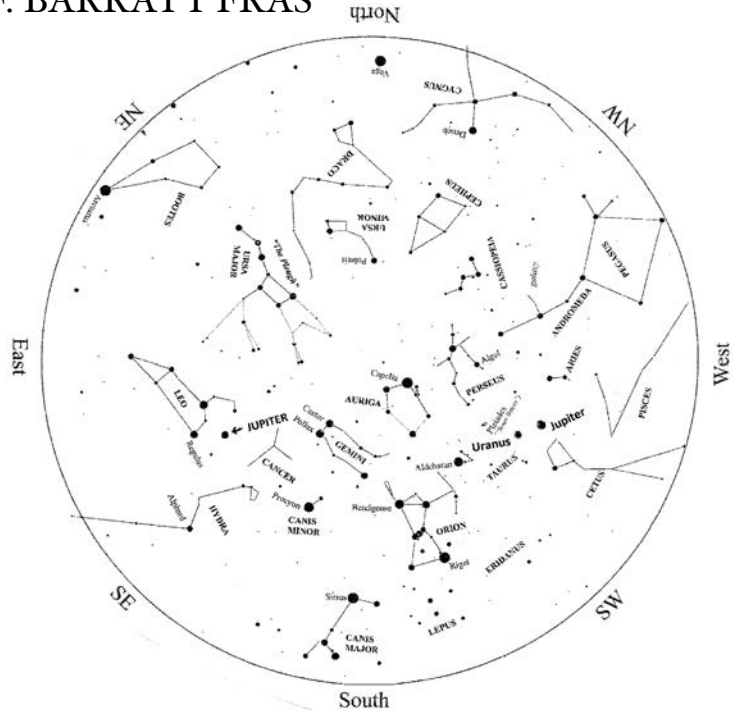
T: 07817 781 467

E: clare.kaye@outlook.com

SKY AT NIGHT BY MICHAEL F. BARRATT FRAS

Jupiter continues to dominate the evening sky at a bright magnitude of -2.5. It is unmistakable, shining brighter than any of the stars in the sky. Unlike the stars it does not “twinkle” but shines with a steady light. This is because it does not produce its own light but shines with the reflected light of the Sun. The giant planet is now setting at around midnight so the best views are in the early evening, when it is still quite high above the horizon.

The constellation of Orion (the Hunter) contains the bright first magnitude stars of Betelgeuse and Rigel. Betelgeuse is a red giant coming towards the end of its life – and Rigel a hot, relatively new blue giant. Orion also has one of the showpieces of the winter sky – the Orion Nebula, visible to the naked eye underneath Orion’s Belt, out of which are born new stars.



Map of night sky in mid-February (around 2100 hours)

The constellation of Canis Major (the Great Dog) has the brightest star in the night sky – Sirius (the Dog Star) which, because of its low altitude in the UK, twinkles incessantly producing all the colours of the rainbow. Others on view are Auriga (the Charioteer), Gemini (the Twins) and Taurus (the Bull) with their many wonderful open star clusters. Look out for Messier 44 (“The Beehive”) which can be found with the naked eye as a misty patch in the constellation of Cancer (the Crab) midway between Gemini and Leo (the Lion) lying pretty much on the Ecliptic (the path taken by the Sun, Moon and most of the planets). Seen through binoculars, it looks like a swarm of bees. These star clusters are, astronomically speaking, very new, containing mainly recently born blue stars.

There are also a number of comets in the sky at the moment although you will need good binoculars or a telescope to see them. The famous Halley’s Comet is now on its way back to the inner Solar System but will not be visible until 2061.

The full moon occurring on January 26 is traditionally known as the “Wolf Moon” - and the one on February 24, the “Snow Moon”.



GREEN FINGER SOLUTIONS LTD

**Green Finger Solutions
Grounds Maintenance &
Arboricultural Specialists**

Contact Charlie for a free quote for tree, woodland, garden and landscaping projects.
Fully insured.

Telephone: 07585 002876
treegfs@gmail.com



✉ rod@newbournecompost.co.uk

☎ 01725 518673 or 07896 544197

🌐 www.newbournecompost.co.uk

Looking for a Green Waste Disposal site?

Excellent quality screened topsoil

Landscaping compost for domestic or commercial use

Delivery service for bulk bags or loose loads

PRIMARY SCHOOL ART GOES ON SHOW

An array of artwork from pupils at Downton Primary School is on show in the foyer of the Five Rivers Leisure Centre, transforming the space into an art gallery. This year's exhibition is entitled "Downton Makes its Mark," reflecting the unique contributions of the pupils to the world of art. Headteacher, Paula Carlton said, "This year's theme has inspired a rich tapestry of creativity, where each piece carries the distinctive mark of individual artists demonstrating imagination and artistic expression."



Art work on display

THE GARDEN

The Garden at Downton Baptist Church is run by volunteers, and is a place to share, to sow, plant, and gather together. The food and flowers that are grown are given away in The

Larder. Over the Winter Months The Garden is open on Sundays from 2:30pm - 3:30pm. Thursday's Family Gardening sessions will resume on 7 March (3:15pm - 4:15pm).

FLOWER ARRANGING SOCIETY'S GOLDEN ANNIVERSARY

The Forest Edge Flower Arranging Society celebrated its 50th Anniversary with an evening of floral demonstrations by Michael Bowyer, MBE at the Memorial Hall, attended by nearly 100 people. Members wore golden corsages for the occasion and were welcomed by a glass of Prosecco. Special medals were presented to long-standing members of the society: Sue Stickland and Shirley Dawkins (40 years) and Stella Lodder (50 years).

The Society's president, Martina Coleman, said, "Warm appreciation goes to all members, past and present, as well as the local community, for joining in the celebration of this remarkable milestone. The anniversary event was certainly a fitting tribute to the dedication, creativity and friendship that have defined the society

throughout its history."

Members create floral designs inspiring each other.

Meetings are held on the first

Monday of every

month (except Jan and Aug) at Morgans Vale & Woodfalls Village Hall, usually from 7.30pm

(refreshments from 7pm). Anyone interested in flowers, floral art, and friendship is welcome.


More information from: Julie Bottone 514875, email: forestedgeflower@gmail.com or visit the Society's Facebook page facebook.com/groups/forestedgeflower.



Stella Lodder, Shirley Dawkins, and Daphne Jennings

HAIR ART

THE CITY SALON
IN DOWNTON VILLAGE



Cut and-blow dry from £35 - £47
Wet cut from £25 - £32
Colouring from £42 - £70

T: 01725 512 690 www.hairartdownton.co.uk

THE HEADLANDS, DOWNTON, SP5 3HH

Sampson Coward SOLICITORS Legal Excellence



→ Family → Employment → Property
→ Litigation & Disputes → Commercial → Wills & Probate

St Mary's Chambers, 51 New Street, Salisbury, Wiltshire SP1 2PH
t: 01722 410664 e: mail@sampsoncoward.co.uk w: sampsoncoward.co.uk

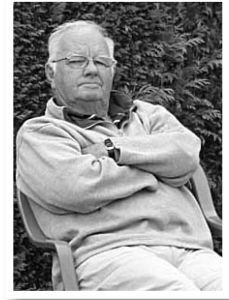
BOWLING CLUB

The club was saddened by news of the death of one of its Life Members, Les Cousins. Les was one of the original members who helped build an organised Club as well as helping build the Club House structure, including the Social Club. At various times, Les was Club Captain, President and Greenkeeper.

A club spokesman said "It's true to say that Les was a legend at the Club, within the game locally, and county wide."

Activities continue at the Club during the

closed season. There are regular Coffee Mornings, with cake, raffles and bingo. Short mat bowls continues in the Clubhouse on Thursday afternoons at 2:15pm, from now until 14 March. A Race Night and a Skittles Evening are planned to take place soon. Find out more from Mike Hallam on 513539 or go to downtonbc.co.uk.



Les Cousins

DOWNTON DOWNTIME

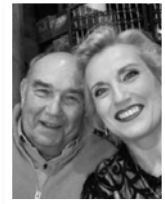
Downton Downtime has started up again for the New Year and is looking forward to welcoming an artist and a dancer - to "shake off those winter blues". Set up for those with memory problems - or anyone who is feeling socially isolated - they meet on Tuesdays at the

Sherwood Suite, Wick Lane from 10.15am - 12 midday. The sessions are free, but donations are welcome to cover the venue and the heating bills. For more information please contact Jane Ebel on musecic@gmail.com Tel: 07515 822479

ACCOMMODATION NEEDED FOR SVITLANA'S DAD!

Many in the village will know Svitlana Kondzelya, a Ukrainian who made Downton her home when she arrived due to the invasion. Her son, Ivan, goes to the primary school and Svitlana has organised some successful fund-raising events for Ukrainian causes. Her father is also temporarily living in the village, but now needs new accommodation. If you have a spare

room, and are willing to sign up to the Homes for Ukraine scheme (and earn £500 per month), contact either Svitlana (07548 710057, kondzelya@gmail.com) or Beth Negus (beth@executive.english.eu) the local co-ordinator, who can guide you through the process and answer questions.



www.jamesshipton.co.uk

Plans drawn for:

- New Build
- Extensions
- Loft Conversions
- Planning Permission
- Building Regulations

also

Structural Calculations

James Shipton B.Eng(Hons)
Structural Engineer

01725 512065

mail@jamesshipton.co.uk

Hm&G
— GROUND & GARDEN —

Working with

GARRISON GARDENERS

All aspects of garden and groundwork undertaken...

- Grass Cutting • Regular Maintenance
- One-off Seasonal Tidy-ups
- Landscaping • Hedge & Tree Care
- Fence Erecting/Repairs
- Pressure Washing • Weed Control

Fully insured, Safecontractor registered and upper tier waste carrier.

Contact the team on: **01722 346 949**
Text on: **07881 378 600**
email: info@hmandg.co.uk
www.hmandg.co.uk



SEEDY SUNDAY

Downton Green Network’s Seedy Sunday will be on Sunday 24 March in the Memorial Hall. The group is keen to hear from people who would like to help with the event - or have ideas about gardening and growing in an eco-friendly way. Now is the time to start looking out any unwanted seeds that you can take along and swap for something different. The Network can be contacted on 513191 or via their website: downtongreengroup.org.uk.



Last year’s Seedy Sunday

START SOMETHING NEW AT THE LIBRARY

Downton Library has activities for all ages.

For crafty adults, the Crafternoons meet every other Monday, 12:45-1:45pm. Or come along to a special craft session on Friday 23 February, 10:30-11:30 am. No need to book, just bring your craft supplies. Children’s craft activities and story times are run occasionally during school holidays.

For little ones, Rhyme Time runs every other Friday morning, 9:30-10am. It’s a free event and all pre-school babies and children are welcome.

For young bookworms (4-16 year olds), there is a new Story Adventures’ Club: a challenge to read 100 books! There is no time limit, a free booklet to log your reads and stamps to collect as you read more books (the photo attached shows the booklet options available).

For history lovers, Richard Nash is back by popular demand to repeat his talk "Walk through Downton in old postcards". Booking is essential, call or visit to book.

For crime/thriller lovers, would you like to be part of a crime/thriller reading group that meets in the library? Contact the library to find out more.

For Lego enthusiasts, a Lego Club that runs once a month) and the occasional Lego Play session during holidays and weekends. Booking is essential.

It’s winter and it’s getting colder. The library is one of Downton’s warm spaces and a place where anyone can enjoy a chat in the comfort of the library, "Happy to Chat" is run by the library’s friendly volunteers on a Thursday.



Story Adventure Club Booklets



PCL
The Portway Centre Limited

OFFICES AVAILABLE!

We offer a range of flexible layouts to include: open plan format, suites of offices including meeting rooms, or simply small offices.
Whatever it is you need, we can accommodate!

Please check our website for availability.



01722 435600

info@theportwaycentre.co.uk

www.theportwaycentre.co.uk




SPIRE HOMECARE

A family business with family values.

OUR COMPANY

Spire Homecare aim to provide a service that fully satisfies the needs and expectations of the individual in their own home. We understand the importance of being at home, keeping control of your life and remaining as independent as possible. Our manager will discuss your needs, and together, design a person centered care/support plan, taking into account your views and preferences.

LIVE IN CARE

FROM £1255 PER WEEK

Our live-in care services provide one-to-one person-centred support in your own surroundings. Having someone live with you can give you the confidence and assistance continue to live in your own home. Our team of fully trained and vetted professionals can support with the same care tasks as our Homecare team, but at any point during the day. We always take your preference into consideration.

WE OFFER A FREE NO OBLIGATION ASSESSMENT OF CARE IN YOUR HOME.

CONTACT US TODAY ON 01722 327319

www.spirehomecare.co.uk

info@spirehomecare.co.uk

What, Where, When				
January				
Friday	26	10am - 12 noon	'Fridays' Community Cafe, Memorial Hall	
February				
Thursday	1	10am	TalkAbout: Under the Veil, Woodfalls Methodist Church, The Ridge	Page 15
Thursday	1	10am - 12 noon	Hearing Aid Clinic, Downton Baptist Church	
Thursday	1	7:30pm	Public Meeting: Proposed River Festival, Bonvalot Room, Memorial Centre	Front page
Friday	16	2 - 3:30pm	The Wardrobe, Clothing Exchange, Baptist Church	Page 4
Friday	23	10am - 12 noon	'Fridays' Community Cafe, Memorial Hall	
Friday	23	10:30 - 11:30am	Craft morning, Downton Library	Page 14
Saturday	24	Tbc	Tour of Water Treatment works	Page 5
March				
Sunday	3		Deadline for contributions to Spring InDownton	
Thursday	7	10am - 12 noon	Hearing Aid Clinic, Downton Baptist Church	
Thursday	7	10am	TalkAbout: Stars Appeal, Woodfalls Methodist Church, The Ridge	Page 15
Saturday	16		Spring InDownton published	
Friday	22	2 - 3:30pm	The Wardrobe, Clothing Exchange, Baptist Church	Page 4
Sunday	24	2 - 4pm	Seedy Sunday	Page 14
Thursday	28	7:30pm	Horticultural Society Talk, "Cherry Tree Nursery", Memorial Hall	Page 9
Friday	29	10am - 12 noon	'Fridays' Community Cafe, Memorial Hall	

TALKABOUT AT WOODFALLS METHODIST CHURCH

The next TalkAbout session is on Thursday 1 February. Sandra Simmonds will be sharing her experiences living in Iran in 1979, when the revolution deposed the Shah and the political climate changed. The talk is entitled "Under the Veil". Sandra talks about her life in Iran prior to the revolution in 1979 - and her escape with her

family back to the UK.

On 7 March, the subject of the talk will be "The Stars Appeal".

TalkAbout takes place at Woodfalls Methodist Church. There is no need to book. The cost of £4 includes refreshments. Car parking is at the back of the church.

DOWNTON LINK

Downton Link is run by volunteers who offer help with transport and act as good neighbours for people in need, regardless of age or circumstances. Transport is available for hospital, surgery, dental and optician appointments, shopping, hairdressers, visiting friends or relatives in hospital, collecting prescriptions, library books. They also provide a befriending service.

There is no charge but the Link depends on donations from its users to help run the service. The Link is always in need of volunteers especially drivers. Volunteers receive a mileage allowance and get organised training, information and social events twice a year.

To volunteer or to request help with transport call 513807 or email info@downtonlink.org.uk



PARISH COUNCIL

Clerk: Melanie Camilleri

Telephone: 07798 698199

Office Hours: Monday - Friday
10am - 3.30pm

clerk@downtonparishcouncil.gov.uk

downtonparishcouncil.gov.uk

WILTSHIRE COUNCIL

Cllr Richard Clewer

53 Highlands Avenue, Whiteparish,
Salisbury SP5 2SZ

01794 884550

richard.clewer@wiltshire.gov.uk

MOBILE POST OFFICE

Fridays

Moot Lane 9am - 10am

The Bull 10.05am - 11.05am

**HIGH STREET
PHARMACY**

Monday to Friday 8.30am - 6pm

(closed for lunch 1-2pm)

Saturday 9am - 12noon

Tel: 01725 510388

LIBRARY

01725 511003

Opening Hours

Monday 2pm - 7pm

Tuesday 2pm - 5pm*

Wednesday 2pm - 5pm*

Thursday 10am - 1pm*

Friday 10am - 5pm

Saturday 10 - 1

* volunteer operated sessions

LEISURE CENTRE

Mon - Fri 6.30am - 10pm

Sat & Sun 9am - 5pm

01725 557268

downtonleisurecentre.co.uk

MEMORIAL CENTRE

To book hall or meeting rooms
contact Hilary Mace 07760 415818
email: bookingsecretary@
downtonmemorialcentre.co.uk

THE LARDER

Downton Baptist Church
Free food, every week.

Open for donations and collections

Monday 6pm - 7pm

Wednesday 9am - 10am

**10%
OFF**

FOOD AT THE BULL!

There's still time to get 10% off all food orders at The Bull during January. Quote "InDownton 2024" when ordering to get this exclusive offer.

Call 01722 580681 for more information or to book a table.

DOWNTON BAPTIST CHURCH (DBC)

South Lane, Downton SP5 3NA

Sunday Service: 10.30 am (check website for latest details)

Ministers

Rev Philip Rhoades: philip@downtonbaptist.org 07468 491143

Rev Katy Ulyatt: kathy@downtonbaptist.org 07786 248880

Church Office open Monday - Thursday, 9am - 1pm 512971

office@downtonbaptist.org

downtonbaptist.org

ST LAURENCE PARISH CHURCH

Church Hatch, Downton SP5 3PU

Sunday Service: 10.30 am (check website for details)

Team Vicar: Revd Veronica Batchelor 01725 513878;
veronica@forestandavon@gmail.com

Parish Administrator, Jo Parsons 01725 512738
stlaurencedownton.co.uk

CHURCH OF THE GOOD SHEPHERD (ROMAN CATHOLIC)

Barford Lane, Downton SP5 3QA

Mass on 3rd Thursday of the month at 6.30pm in the Chapel.

Service of the word on Tuesdays at 6.30pm via zoom on weeks when no mass on Thursdays. To join, contact John Elliott 07980 921558

Enquiries: St Osmund's, 95 Exeter Street, Salisbury SP1 2SF

Telephone: 01722 333581; office@salisburycatholics.org

VILLAGE WEBSITE:

downtonvillage.co.uk

Distributed to every house in the village, 5 times a year.

For information about contributing or advertising, email:
editor@indownton.org.uk or visit the website.

Next Issue: Deadline for contributions: 3 March 2024

Publication date: 16 March 2024

Sponsored and supported by Downton Baptist Church

Website: indownton.org.uk

X: @indownton Facebook: facebook.com/InDownton

Telephone: 01725 513191

Production Team: Rosemary Leo, Paul Leo and Natalie Wright